

OPTICAL CONNECTORS & ADAPTERS

Creating powerful and long lasting connections

BYTEWORX
Connectivity, Simplified



BYTEWORX

Connectivity, Simplified

At BYTEWORX, we constantly endeavour to provide a seamless experience to our clients in the most progressive and technologically viable way possible. Since inception in the year 2014, we are expanding with each passing day in terms of gamut of services & solutions we offer, cost-effective solutions, via research & development of technically superior products. Our teams consists of industry experts holding vast experience and technical know-how of successfully undertaking large-scale projects.



Our Mission

Our Mission is to provide technically sound products, solutions, and services complying with Clients' expectations at a competitive price. This way, we aspire to align our processes we are listed in the top 10 Companies of India providing solutions for varied sectors like mobility, telecom, and infrastructure Projects.



3.



Our Vision

Our vision is to maintain consistency in delivery of quality and timely services to our valued clients. We envision to pay huge emphasis of constant R & D of our processes & products to build long-term associations with Industry leaders.

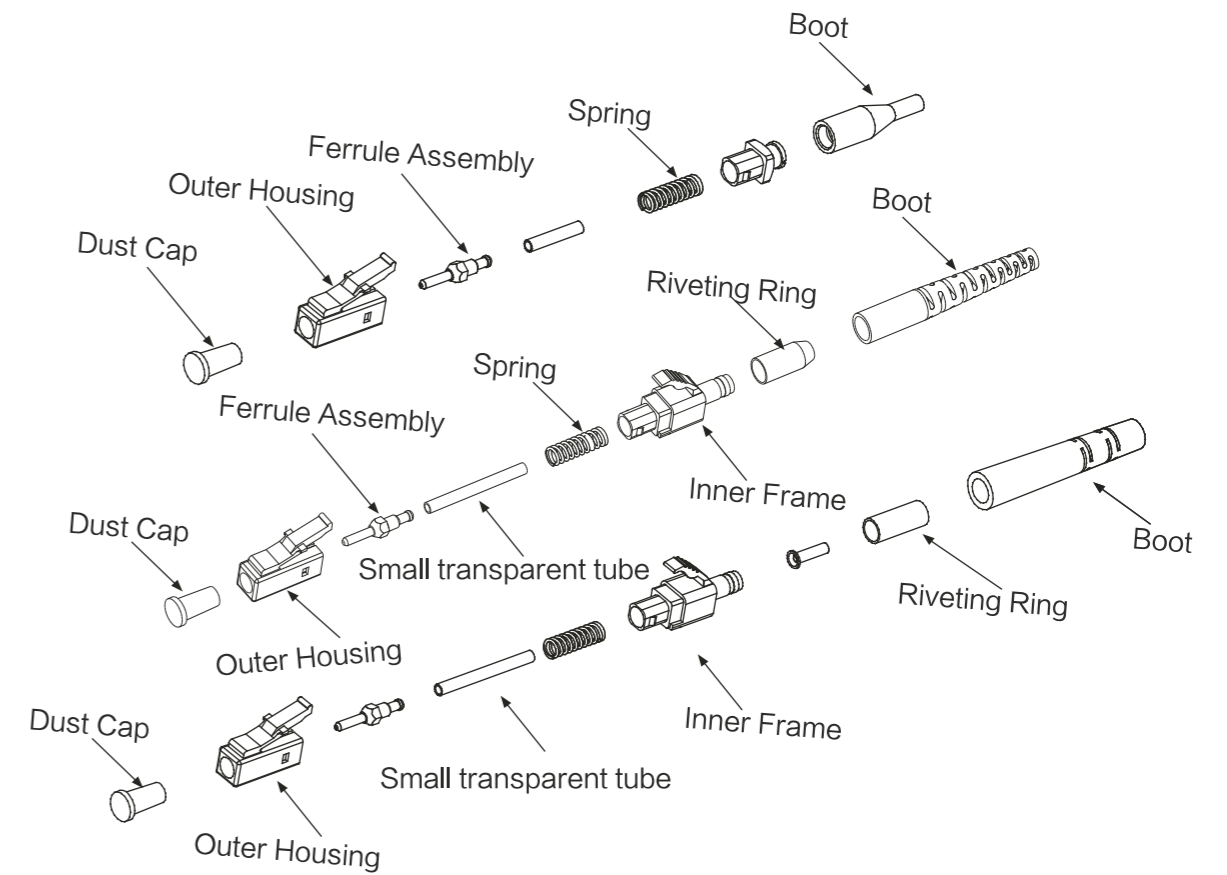
BYTEWORX
Connectivity, Simplified

4.

Optical Fiber Connector Series

LC Series Connector Exploded Views

LC 0.9/2.0/3.0



LC Series Selection table

Model	Color of housing	Color of boot	Color of Duplex clip (optional)	Fiber cable	Ferrule
LC	LC/UPC(Blue)	LC/UPC(Blue)	LC/UPC(Blue)	Φ0.9mm Φ1.2mm Φ2.0mm Φ3.0mm	SM MM
	LC/APC(Green)	LC/APC(Green)	LC/APC(Green)		
	MM(Beige)	MM(Beige)	MM(Beige)		
	OM3(Aqua)	OM3(Aqua)	OM3(Aqua)		
	OM4(Violet)	OM4(Violet)	OM4(Violet)		
	OM5(Lemon Green)	OM5(Lemon Green)	OM5(Lemon Green)		
Colours can be customized					
1	2	3	4	5	6
Blue	Green	Beige	Aqua	Violet	Lemon Green

LC Series
Fiber optic connector



LC 0.9mm SX Connector



LC 1.2mm SX Connector



LC 2.0mm SX Connector

LC Series
Fiber optic connector



LC 2.0mm SX Connector

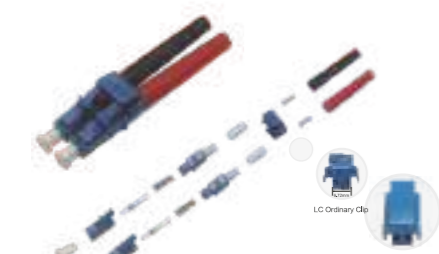


LC 3.0mm SX Connector



LC 2.0mm DX Connector

LC Series
Fiber optic connector



LC 3.0mm DX Connector



LC Uniboot Connector



LC Uniboot Connector

LC Series
Fiber optic connector



LC Uniboot Connector



LC Uniboot Connector



LC Uniboot 5.0mm Connector

LC/DIN Series
Fiber optic connector



LC 0.9mm Square Hole Connector



DIN 3.0mm SX Connector

LC Fiber Optic Connector
/Performance Parameter Table

Items	Ferrules	Inner diameter of ferrules	Ferrules Concentricity	Insertion loss	Return loss	Working temperature	Storage temperature
SM	UPC	125.3~126.3μm	<1.0μm	@1310/1550nm≤0.2dB	≥50dB	-40~+85°C	-40~+85°C
	APC		<0.5μm <0.3μm		≥60dB		
MM	PC	125.5~126.5μm	<4.0μm	@850/1300nm≤0.2dB	≥30dB		

LC Series
Fiber optic connector Boot



LC Series
Fiber optic connector Boot

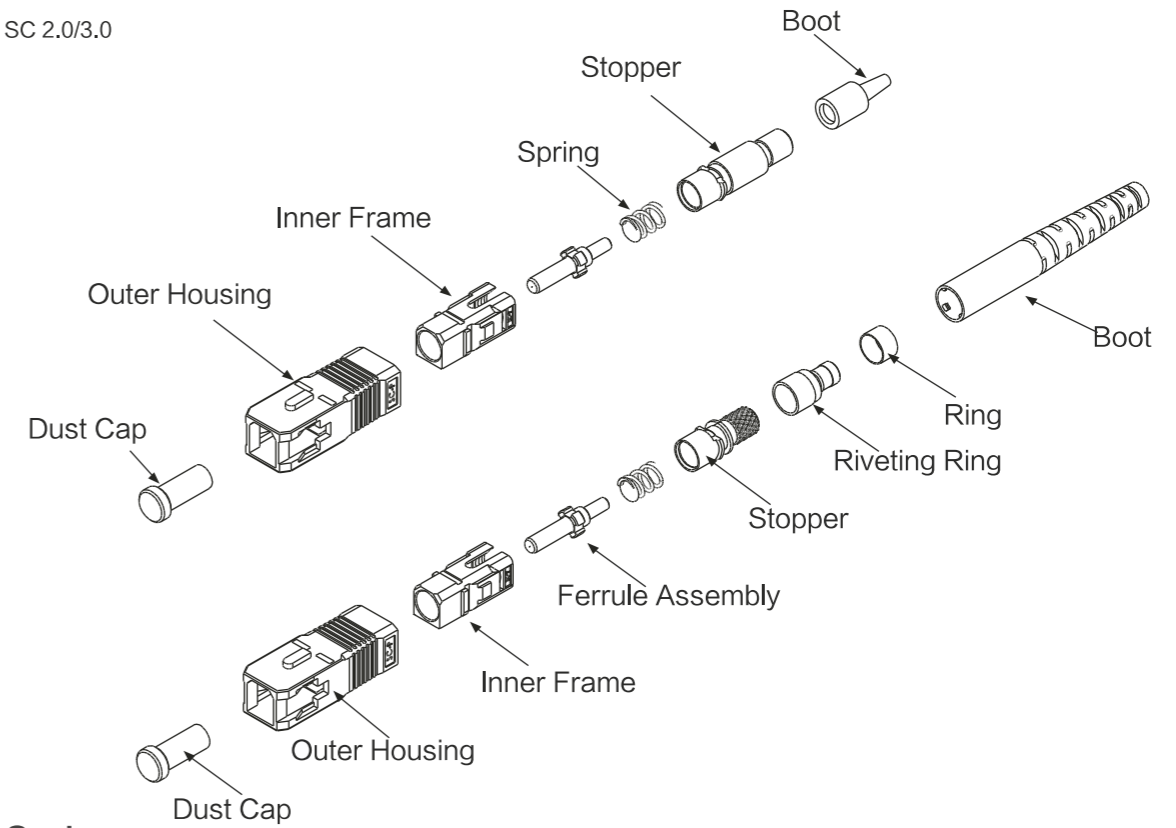


LC Dust Cap/Ferrule



SC Series
Connector Exploded Views

SC 0.9 SC 2.0/3.0



SC Series
Selection table

Model	Color of housing	Color of boot	Color of Duplex clip (optional)	Fiber cable	Ferrule							
SC	SC/UPC(Blue)	SC/UPC(Blue)	SC/UPC(Blue)	Φ0.9mm Φ1.2mm Φ2.0mm Φ3.0mm Φ3.5mm Φ4.5mm	Ceramic SM UPC Ceramic SM APC Ceramic MM PC							
	SC/APC(Green)	SC/APC(Green)	SC/APC(Green)									
	OM1/OM2(Beige)	OM1/OM2(Beige)	OM1/OM2(Beige)									
	OM3(Aqua)	OM3(Aqua)	OM3(Aqua)									
	OM4(Violet)	OM4(Violet)	OM4(Violet)									
	OM5(Lemon Green)	OM5(Lemon Green)	OM5(Lemon Green)									
Available in 12 colours:(Can be customized)												
No	1	2	3	4	5	6	7	8	9	10	11	12
Colour	Blue	Orange	Green	Brown	Grey	White	Red	Black	Yellow	Violet	Pink	Aqua

SC Series
SC Connector



SC 0.9mm Connector



SC 1.2mm Connector



SC 2.0/3.0mm Connector

SC Series
SC Connector



SC/UPC 2.0/3.0mm DX Connector



SC APC Flat Drop Cable



SC UNIBOOT 3.0 mm Connector

SC Series
SC Connector



Push Pull SC Connector

SC Series
SC Connector Boot

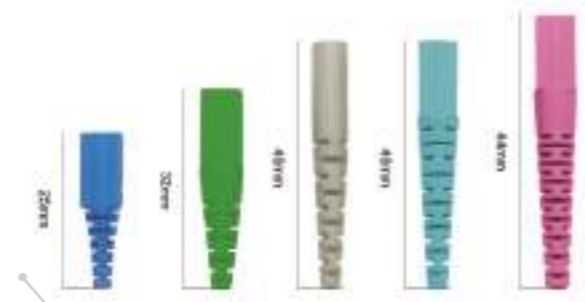


SC 0.9mm Boot

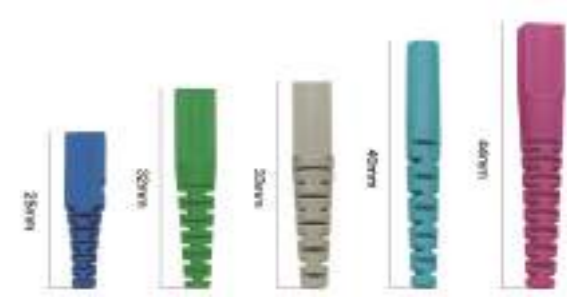


1.2mm universal tail sleeve

SC Series
SC Connector Boot



SC 2.0mm Boot



SC 3.0mm Boot

SC Dust Cap/Ferrule



SC Dust Cap



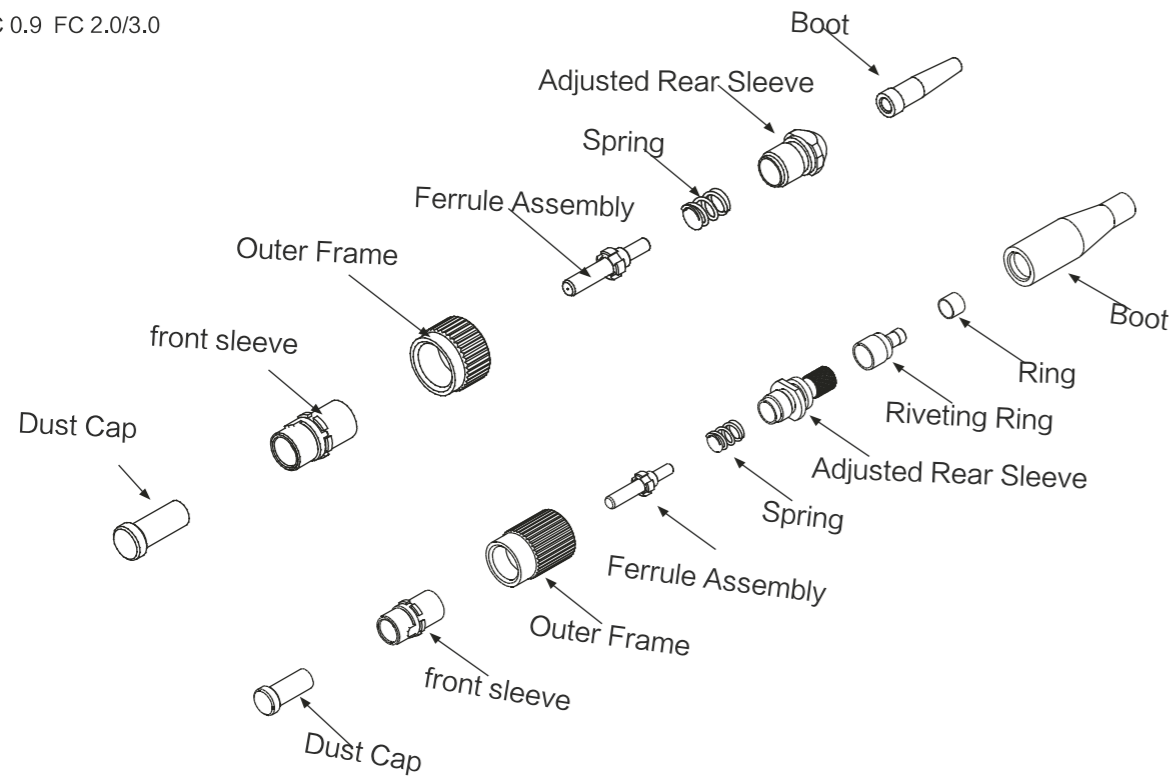
UPC Ferrule



APC Ferrule

FC Series Connector Exploded Views

FC 0.9 FC 2.0/3.0



FC Series Selection table

Model	Color of boot	Fiber cable	Ferrule
FC	SM/UPC(Blue) SM/APC(Green) MM(Beige) OM3(Aqua) OM4(Violet)	Φ0.9mm Φ2.0mm Φ3.0mm	Ceramic SM UPC Ceramic SM APC Ceramic MM PC

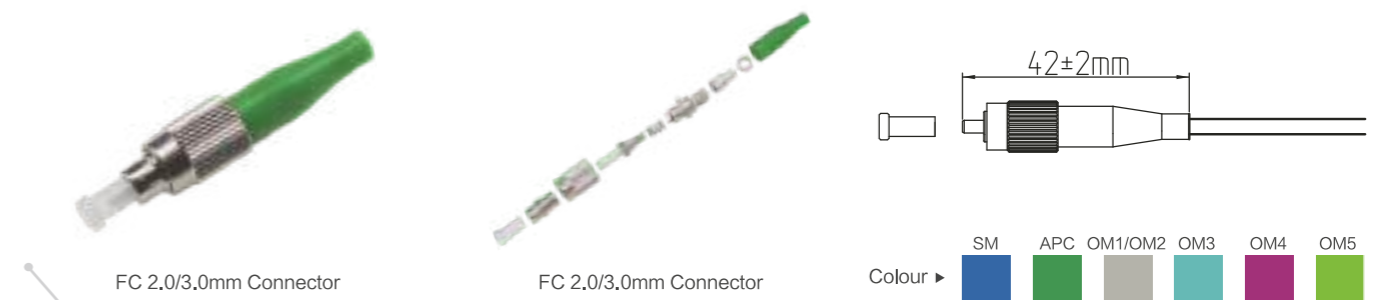
Available in 12 colours:(Can be customized)

No	1	2	3	4	5	6	7	8	9	10	11	12
Colour	Blue	Orange	Green	Brown	Grey	White	Red	Black	Yellow	Violet	Pink	Aqua

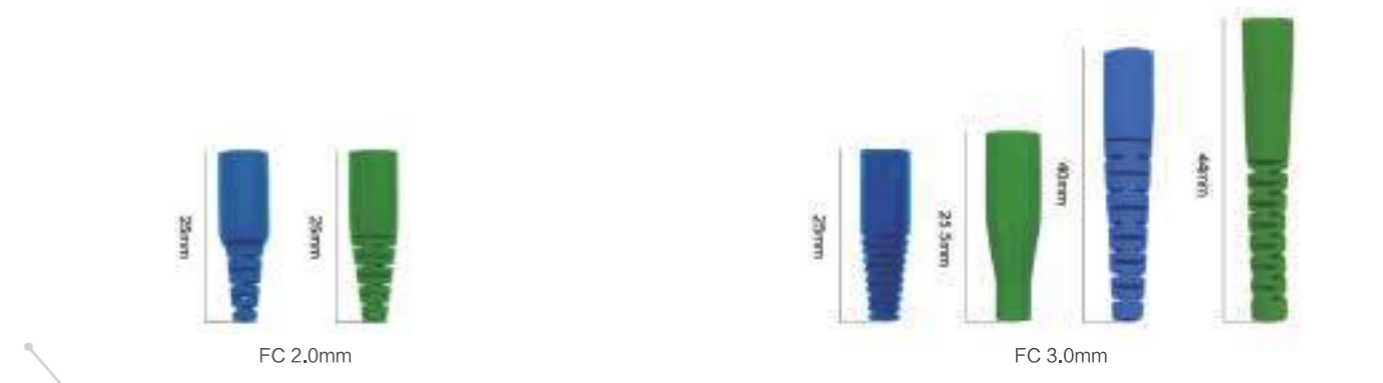
FC Series FC Connector



FC Series FC Connector

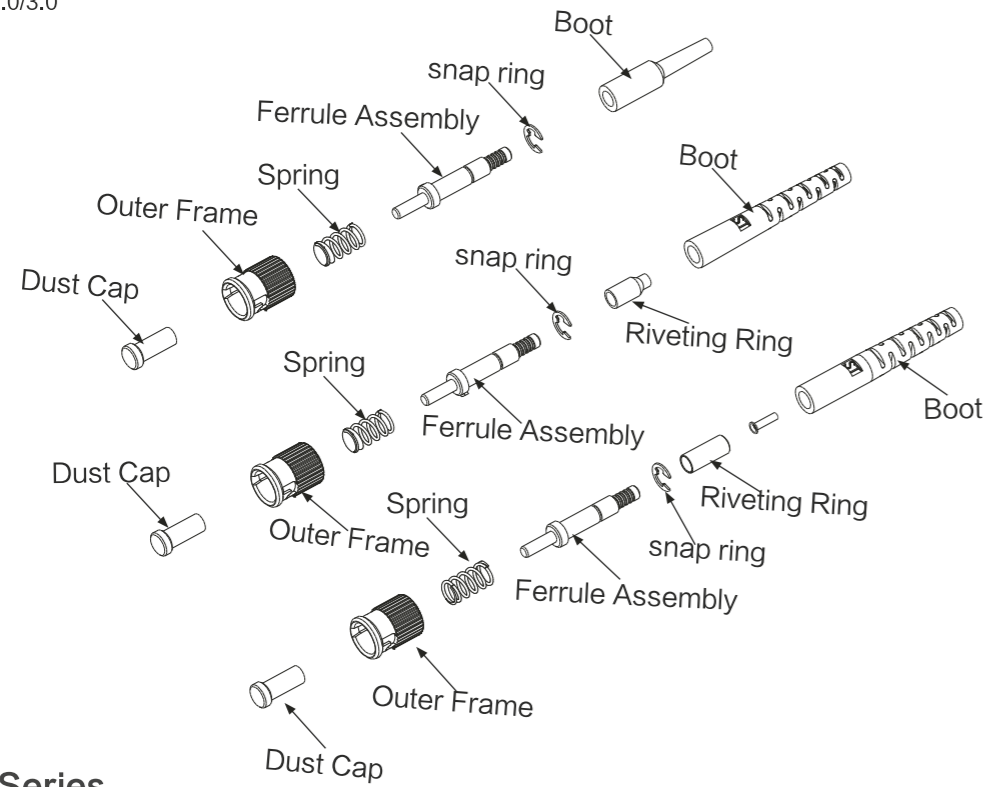


FC Series FC Connector Boot



ST Series Connector Exploded Views

ST 0.9/2.0/3.0



ST Series Selection table

Model	Color of boot	Fiber cable	Ferrule
ST	SM/UPC(Blue) SM/APC(Green) MM(Beige) OM3(Aqua) OM4(Violet)	φ0.9mm φ2.0mm φ3.0mm	Ceramic SM UPC Ceramic SM APC Ceramic MM PC

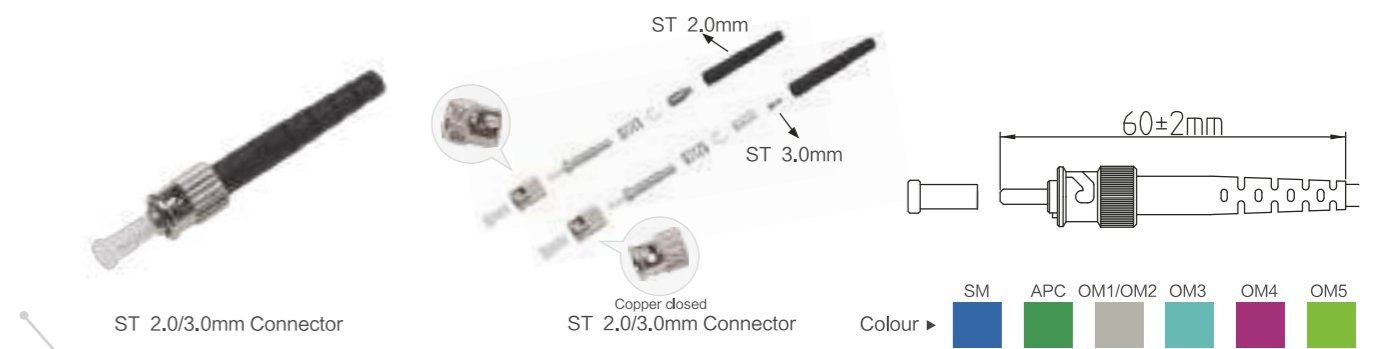
Available in 12 colours:(Can be customized)

No	1	2	3	4	5	6	7	8	9	10	11	5	12
Colour	Blue	Orange	Green	Brown	Grey	White	Red	Black	Yellow	Violet	Pink		Aqua

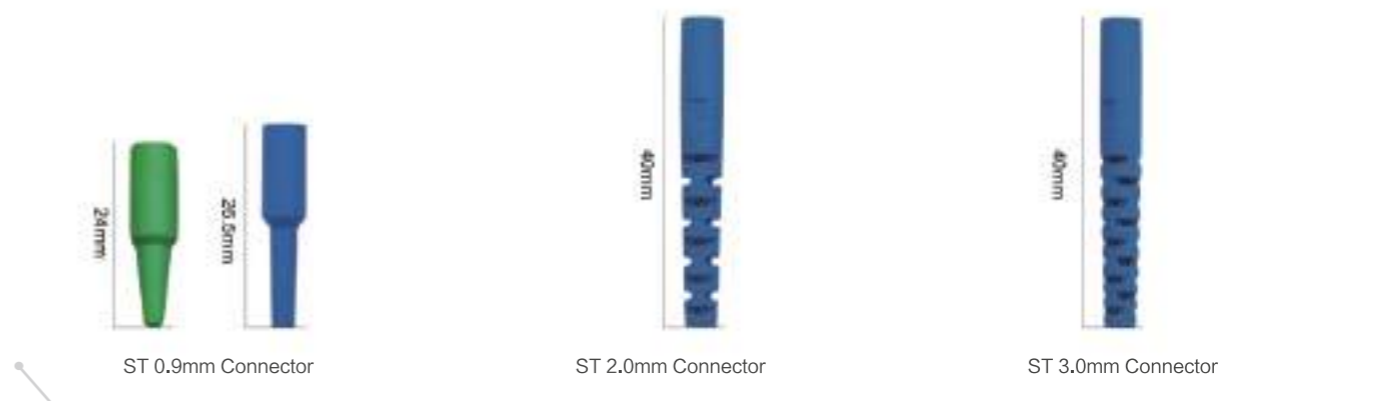
ST Series Fiber optic connector



ST Series Fiber optic connector



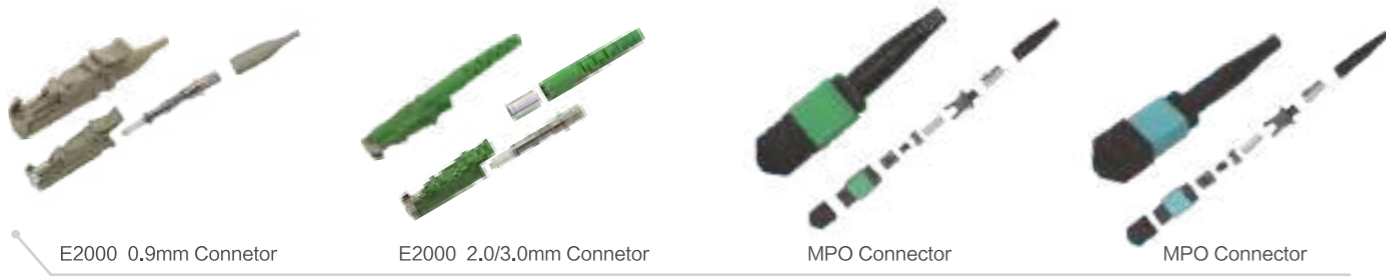
ST Series ST Connector Boot



MU/MTRJ Series Connector



E2000/MPO Series Connector



FAST Field Connector



FAST Field Connector



Optical Adapter

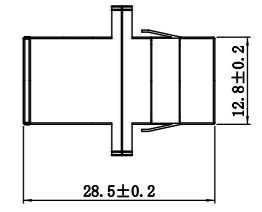
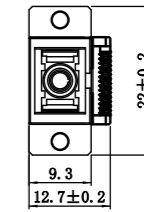
LC Series Adaptor



SC Front Shutter Avoid Laser Adapter With Flange



SC Front Shutter Avoid Laser Adapter With Flange



SC Front Shutter Avoid Laser Adapter With Flange

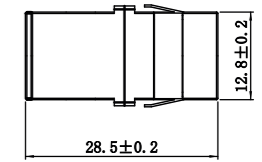
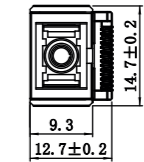
LC Series Adaptor



SC Front Shutter Avoid Laser Adapter Without Flange



SC Front Shutter Avoid Laser Adapter Without Flange



SC Front Shutter Avoid Laser Adapter Without Flange

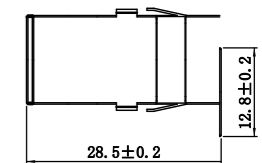
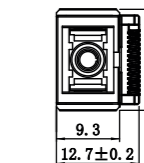
LC Series Adaptor



SC Cover Avoid Laser Adapter Without Flange



SC Cover Avoid Laser Adapter Without Flange



SC Cover Avoid Laser Adapter Without Flange

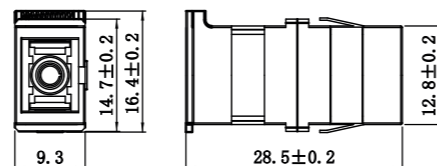
SC Series Adaptor



SC Side Shutter Avoid Laser Adapter Without Flange



SC Side Shutter Avoid Laser Adapter Without Flange



SC Side Shutter Avoid Laser Adapter Without Flange

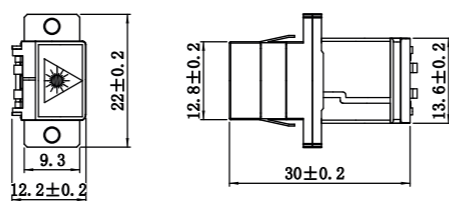
SC Series Adaptor



SC SX Metal Avoid Laser Adapter With Flange



SC SX Metal Avoid Laser Adapter With Flange



SC SX Metal Avoid Laser Adapter With Flange

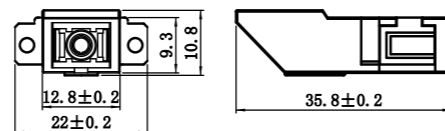
SC Series Adaptor



SC Inner Shutter Adapter With Flange



SC Inner Shutter Adapter With Flange



SC Inner Shutter Adapter With Flange

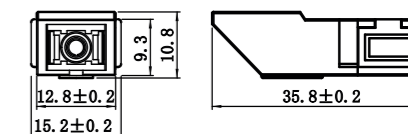
SC Series Adaptor



SC Inner Shutter Adapter Without Flange



SC Inner Shutter Adapter Without Flange



SC Inner Shutter Adapter Without Flange

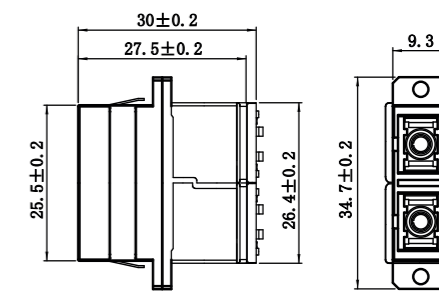
SC Series Adaptor



SC DX Metal Avoid Laser Adapter With Flange



SC DX Metal Avoid Laser Adapter With Flange

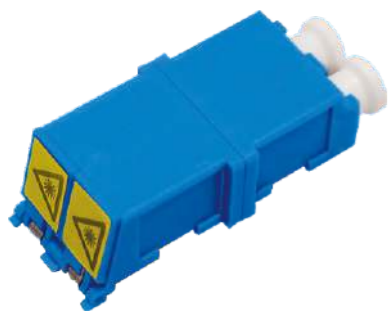


SC DX Metal Avoid Laser Adapter With Flange

Optical Adapter /Performance Parameter Table

Parameter	SM			MM
	PC	UPC	APC	PC
Insertion loss	≤ 0.2dB	≤ 0.2dB	≤ 0.2dB	≤ 0.2dB
Alternating loss			≤ 0.2dB	
Repeatability			≤ 0.2dB	
Durability	The change of 1000 interpolation times is less than 0.20dB			
Working temperature	- 40°C ~ + 85°C			
Storage temperature	- 40°C ~ + 85°C			

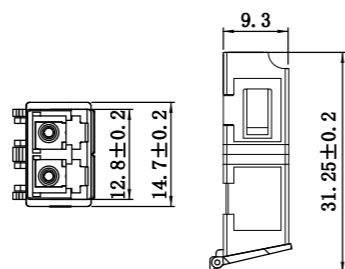
LC Series Adaptor



LC DX Avoid Laser Adaptor Without Flange



LC DX Avoid Laser Adaptor Without Flange



LC DX Avoid Laser Adaptor Without Flange

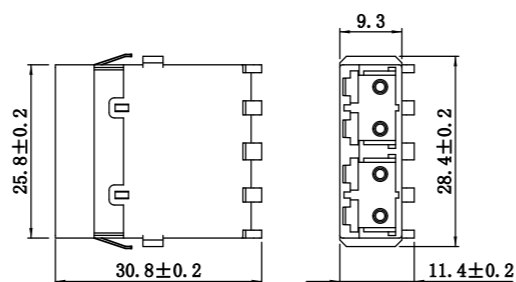
LC Series Adaptor



LC QUAD Avoid Laser Adaptor Without Flange



LC QUAD Avoid Laser Adaptor Without Flange



LC QUAD Avoid Laser Adaptor Without Flange

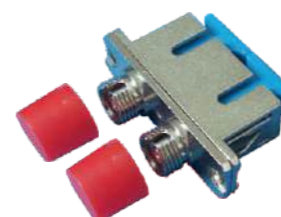
Optical Adaptor
/Performance Parameter Table

Parameter	SM			MM
	PC	UPC	APC	PC
Insertion loss	≤ 0.2dB	≤ 0.2dB	≤ 0.2dB	≤ 0.2dB
Alternating loss	≤ 0.2dB			
Repeatability	≤ 0.2dB			
Durability	The change of 1000 interpolation times is less than 0.20dB			
Working temperature	- 40°C ~ + 85°C			
Storage temperature	- 40°C ~ + 85°C			

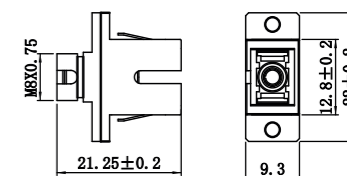
Hybrid Series Adaptor



SC-FC SX Hybrid Adaptor

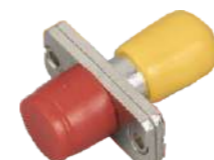


SC-FC DX Hybrid Adaptor



SC-FC SX Hybrid Adaptor

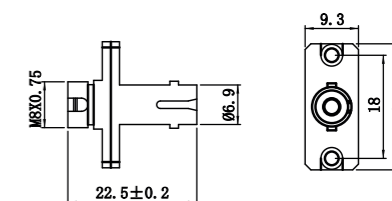
Hybrid Series Adaptor



FC-ST SX Hybrid Adaptor



FC-ST DX Hybrid Adaptor



FC-ST SX Hybrid Adaptor

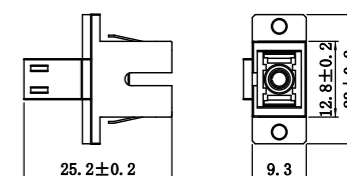
Hybrid Series Adaptor



SC-LC SX Hybrid Adaptor



SC-LC DX Hybrid Adaptor

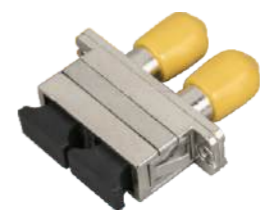


SC-LC SX Hybrid Adaptor

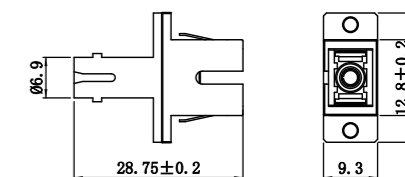
Hybrid Series Adaptor



SC-ST SX Hybrid Adaptor



SC-ST DX Hybrid Adaptor



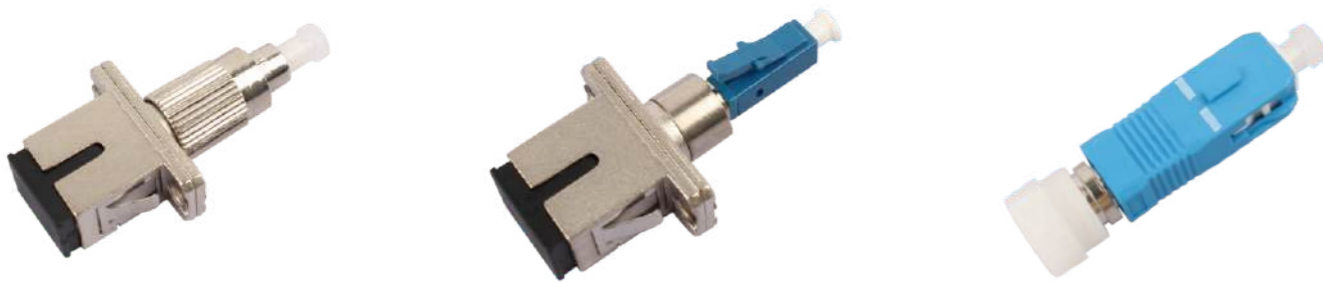
SC-ST SX Hybrid Adaptor

Hybrid Series Adaptor



FC UPC(Male)-LC UPC (Female)Hybrid adaptor ST UPC(Male)-LC UPC (Female)Hybrid adaptor SC UPC(Male)-LC UPC (Female)Hybrid adaptor

Hybrid Series Adaptor



FC UPC(Male)-SC UPC (Female)Hybrid adaptor LC UPC(Male)-SC UPC (Female)Hybrid adaptor SC UPC(Male)-FC UPC (Female)Hybrid adaptor

Hybrid Series Adaptor



SC UPC(Male)-ST UPC (Female)Hybrid adaptor FC UPC(Male)-ST UPC (Female)Hybrid adaptor SC UPC(Male)-E2000 UPC (Female)Hybrid adaptor

Optical Attenuator

SC Series Attenuator



SC/APC Attenuator 2dB SC/APC Attenuator 5dB SC/APC Attenuator 10dB

LC Series Attenuator



LC/UPC Attenuator 3dB LC/UPC Attenuator 5dB LC/APC Attenuator 7dB

FC Series Attenuator



FC Attenuator 3dB FC Attenuator 7dB FC Attenuator 5dB

ST Series Attenuator



ST Attenuator 3dB

Parameter	Unit	Value
Operating Wavelength	nm	1310/1550±10
Tolerance for 1-5dB Attenuation	dB	±0.5
Tolerance for 6-30dB Attenuation	dB	±10
Return Loss	dB	
Operating Temperature	C	-40~+75
Polarization Dependent	dB	
Mating Durability	cycle	>1000

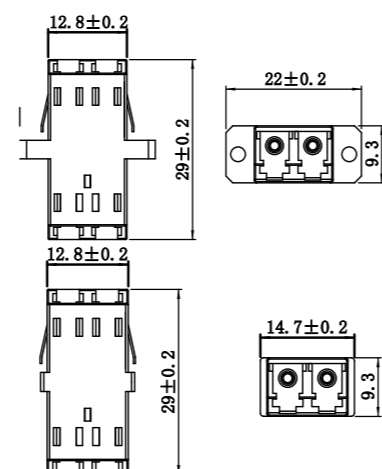
LC Series Adaptor



LC DX One-piece Adaptor With Flange



LC DX One-piece Adaptor Without Flange



LC DX One-piece Adaptor Without Flange

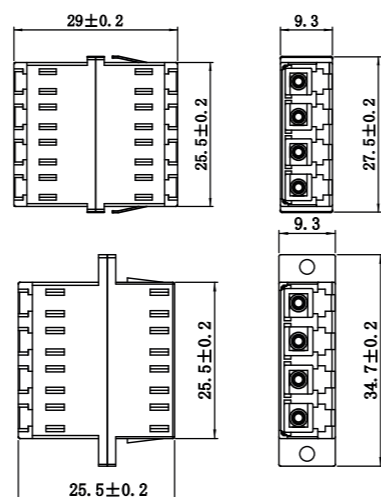
LC Series Adaptor



LC Quad Welding Symmetry-type Adaptor Without Flange

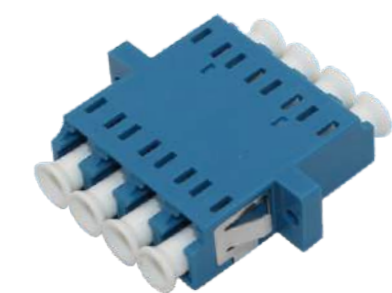


LC QUAD SC-type Welding Adaptor With Flange



LC QUAD SC-type Welding Adaptor With Flange

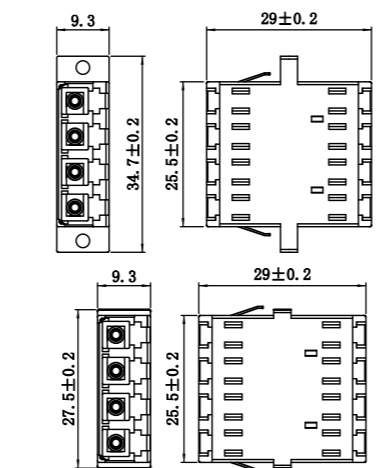
LC Series Adaptor



LC QUAD One-piece Adaptor With Flange

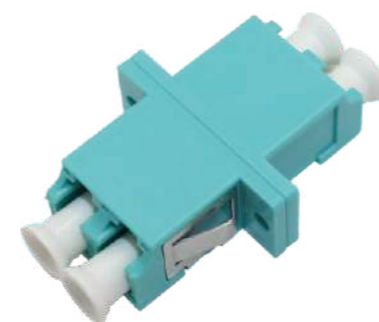


LC QUAD One-piece Adaptor Without Flange

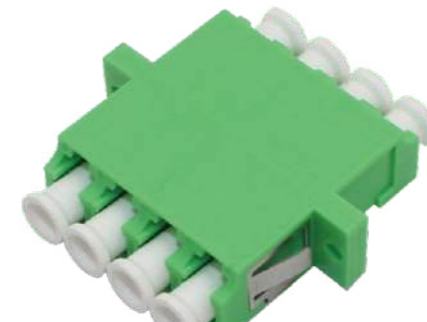


LC QUAD One-piece Adaptor Without Flange

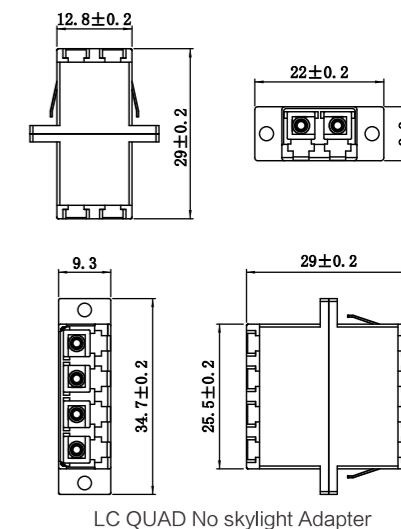
LC Series Adaptor



LC DX No skylight Adaptor



LC QUAD No skylight Adaptor

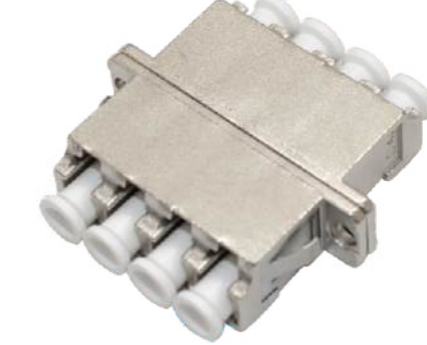


LC QUAD No skylight Adaptor

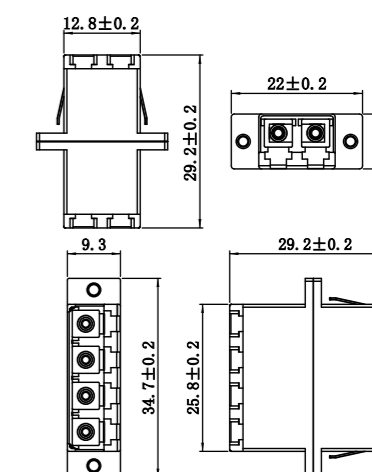
LC Series Adaptor



LC DX metal adaptor



LC QUAD Metal Adaptor



LC QUAD Metal Adaptor

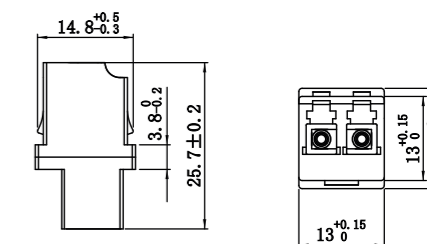
LC Series Adaptor



LC DX High-Low Adaptor



LC DX High-High Adaptor



LC DX High-Low Adaptor

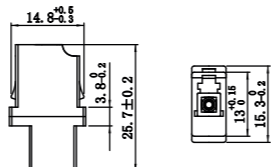
LC Series Adaptor



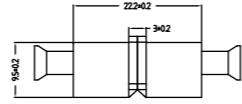
LC SX SC Type Adapter With Flange



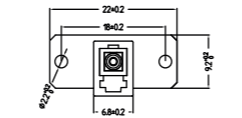
LC SX Adapter without Flange



LC SX Adapter without Flange



LC SX SC Type Adapter With Flange



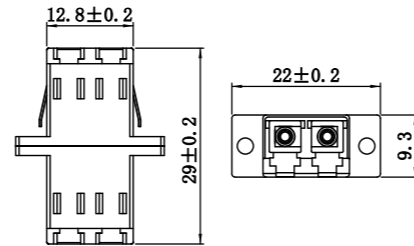
LC Series Adaptor



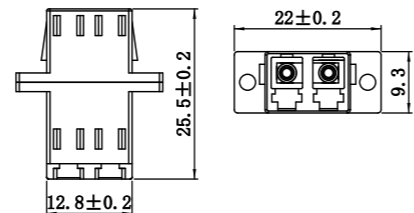
LC DX Welding Symmetry-type Adapter With Flange



LC DX SC-type Welding Adapter With Flange



LC DX SC-type Welding Adapter With Flange



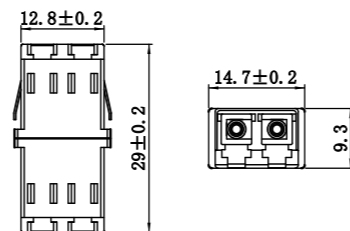
LC Series Adaptor



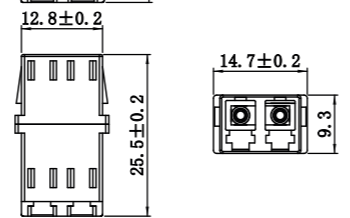
LC DX Welding Symmetry-type Adapter Without Flange



LC DX SC-type Welding Adapter Without Flange



LC DX SC-type Welding Adapter Without Flange



LC Series Adaptor



LC Duplex Bow Back Adapter With Flange



LC DX Inner Shutter Adapter With Flange

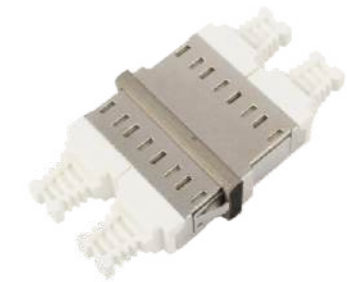


LC QUAD Inner Shutter Adapter With Flange

LC Series Adaptor



LC DX One-piece metal Adapter



LC QUAD One-piece metal Adapter

Optical Adaptor /Performance Parameter Table

Parameter	SM			MM
	PC	UPC	APC	PC
Insertion loss	≤ 0.2dB	≤ 0.2dB	≤ 0.2dB	≤ 0.2dB
Alternating loss	≤ 0.2dB			
Repeatability	≤ 0.2dB			
Durability	The change of 1000 interpolation times is less than 0.20dB			
Working temperature	- 40°C ~ + 85°C			
Storage temperature	- 40°C ~ + 85°C			

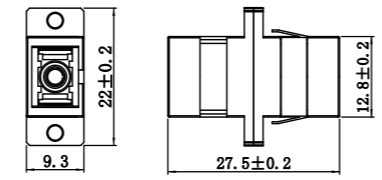
SC Series Adaptor



SC SX Welding Adapter With Flange



SC SX Welding Adapter With Flange



SC SX Welding Adapter With Flange

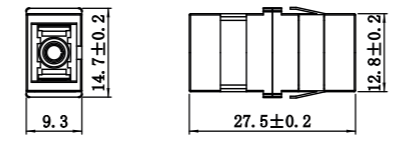
SC Series Adaptor



SC SX Welding Adapter Without Flange



SC SX Welding Adapter Without Flange



SC SX Welding Adapter Without Flange

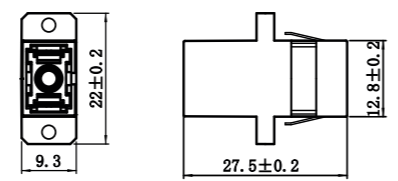
SC Series Adaptor



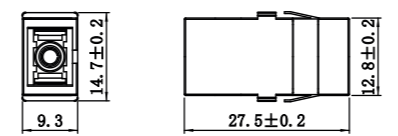
SC SX One-piece Adapter With Flange



SC SX One-piece Adapter Without Flange



SC SX one-piece adapter with flange



SC SX One-piece Adapter Without Flange

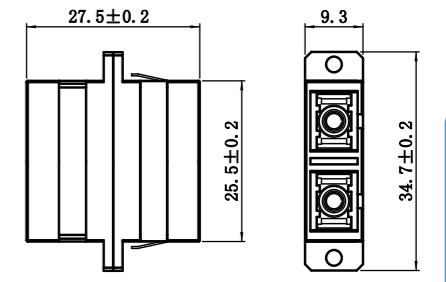
E2000 Series Adaptor



SC DX Welding Adapter With Flange



SC DX Welding Adapter With Flange



SC DX Welding Adapter With Flange

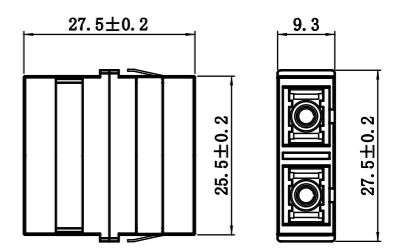
E2000 Series Adaptor



SC DX Welding Adapter Without Flange



SC DX Welding Adapter Without Flange

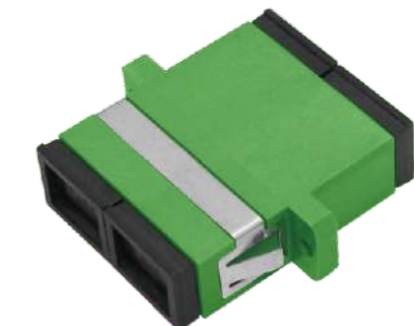


SC DX Welding Adapter Without Flange

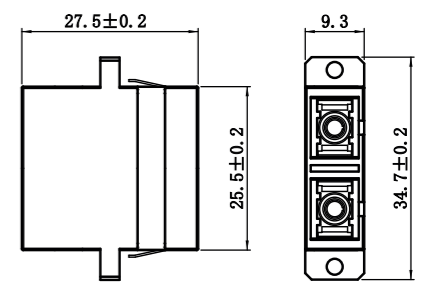
MTRJ Series Adaptor



SC DX One-piece Adapter With Flange



SC DX One-piece Adapter With Flange



SC DX One-piece Adapter With Flange

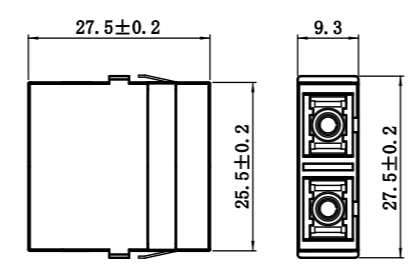
SC Series Adaptor



SC DX One-piece Adaptor Without Flange

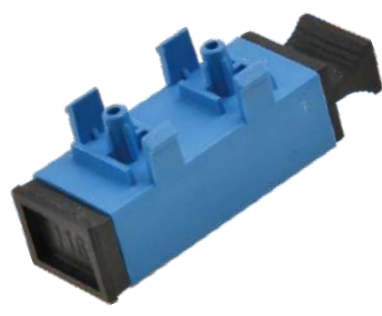


SC DX One-piece Adaptor Without Flange



SC DX One-piece Adaptor Without Flange

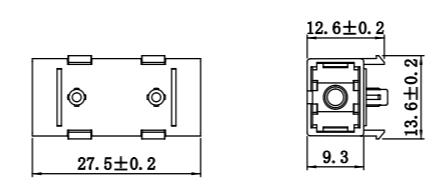
SC Series Adaptor



SC Adapter With Legs



SC Shrapnel Adapter



SC Adapter With Legs

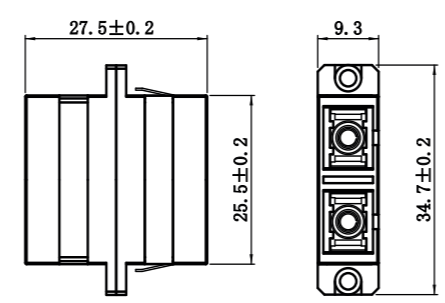
SC Series Adaptor



SC SX Metal Adapter



SC DX Metal Adapter

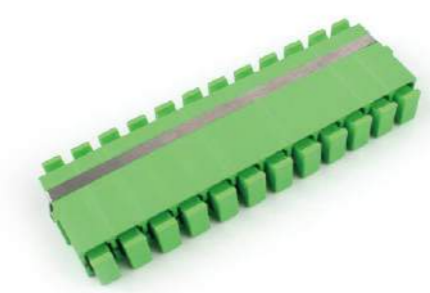


SC DX Metal Adapter

SC Series Adaptor



SC SX Simple Adaptor



SC 12 Core Adaptor

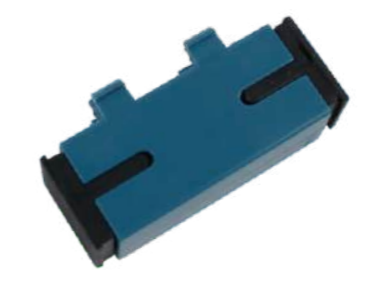


SC Metal Internal Flip Adaptor

SC Series Adaptor



SC SX Anti-dislodging Adaptor



SC Side Strap Foot Adaptor



SC inward flip Double door adaptor

SC Series Adaptor



SC SX adapter with short legs



SC SX Adapter with Legs Round



SC SX Adapter with Legs

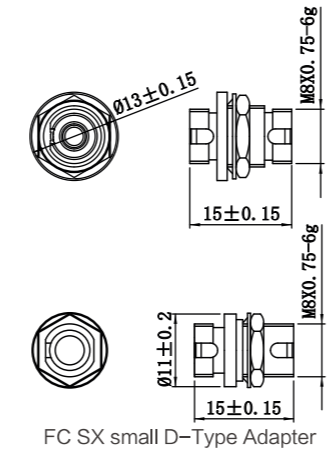
FC Series Adaptor



FC SX big D-Type Adaptor



FC SX small D-Type Adaptor



FC SX small D-Type Adaptor

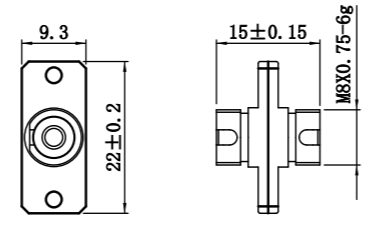
FC Series Adaptor



FC SX Adapter With Rectangle Flange



FC DX Adapter With Rectangle Flange



FC SX Adapter With Rectangle Flange

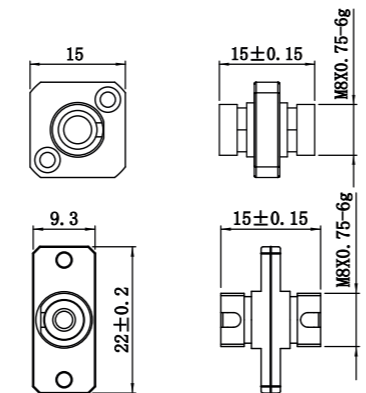
FC Series Adaptor



FC Adapter With Square Flange



FC Adapter With Rectangle Flange

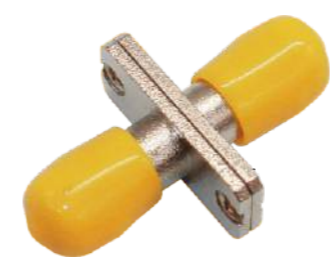


FC Adapter With Rectangle Flange

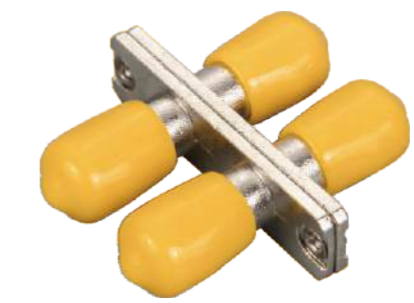
Optical Adapter /Performance Parameter Table

Parameter	SM			MM
	PC	UPC	APC	PC
Insertion loss	≤ 0.2dB	≤ 0.2dB	≤ 0.2dB	≤ 0.2dB
Alternating loss	≤ 0.2dB			
Repeatability	≤ 0.2dB			
Durability	The change of 1000 interpolation times is less than 0.20dB			
Working temperature	- 40°C ~ + 85°C			
Storage temperature	- 40°C ~ + 85°C			

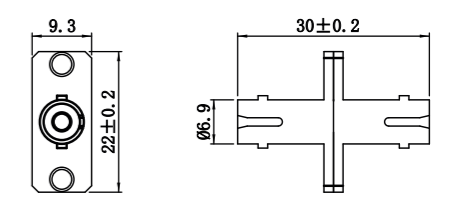
ST Series Adaptor



ST SX Metal Adapter With Rectangle Flange



ST DX Metal Adapter With Rectangle Flange

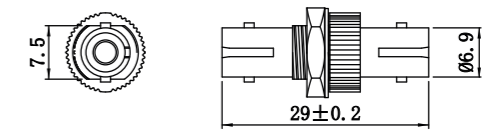


ST SX Metal Adapter With Rectangle Flange

ST Series Adaptor



ST Adapter



ST Adapter

Optical Adapter /Performance Parameter Table

Parameter	SM			MM
	PC	UPC	APC	PC
Insertion loss	≤ 0.2dB	≤ 0.2dB	≤ 0.2dB	≤ 0.2dB
Alternating loss	≤ 0.2dB			
Repeatability	≤ 0.2dB			
Durability	The change of 1000 interpolation times is less than 0.20dB			
Working temperature	- 40°C ~ + 85°C			
Storage temperature	- 40°C ~ + 85°C			

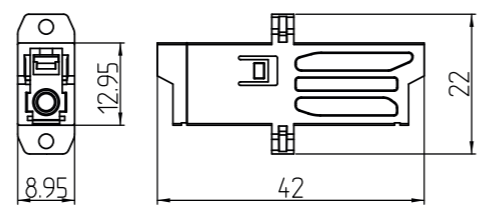
E2000 Series
Adaptor



E2000 Adapter



E2000 Adapter



E2000 Adapter

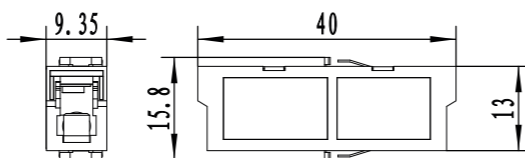
E2000 Series
Adaptor



E2000 Adapter



E2000 Adapter



E2000 Adapter

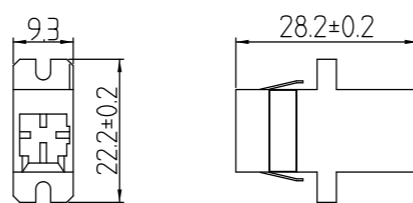
MTRJ Series
Adaptor



MTRJ Adapter



MTRJ Adapter



MTRJ Adapter

MU Series
Adaptor



MU Adapter



MU Adapter

MPO Series
Adaptor



MPO Adapter



MPO Adapter

Optical Adaptor
/Performance Parameter Table

Parameter	SM			MM
	PC	UPC	APC	PC
Insertion loss	≤ 0.2dB	≤ 0.2dB	≤ 0.2dB	≤ 0.2dB
Alternating loss	≤ 0.2dB			
Repeatability	≤ 0.2dB			
Durability	The change of 1000 interpolation times is less than 0.20dB			
Working temperature	- 40°C ~ + 85°C			
Storage temperature	- 40°C ~ + 85°C			



CUSTOM WRAPS INDIA PVT LTD.

12/74, 12/73, Pioneer Complex, Site-IV Industrial Area,
Sahibabad, Ghaziabad, Uttar Pradesh-201010

Phone No.: 0120-4129371, 4128625

Email: info@customwrapsindia.com

Web: www.customwrapsindia.com

CIN: U74999UP2021PTC149365